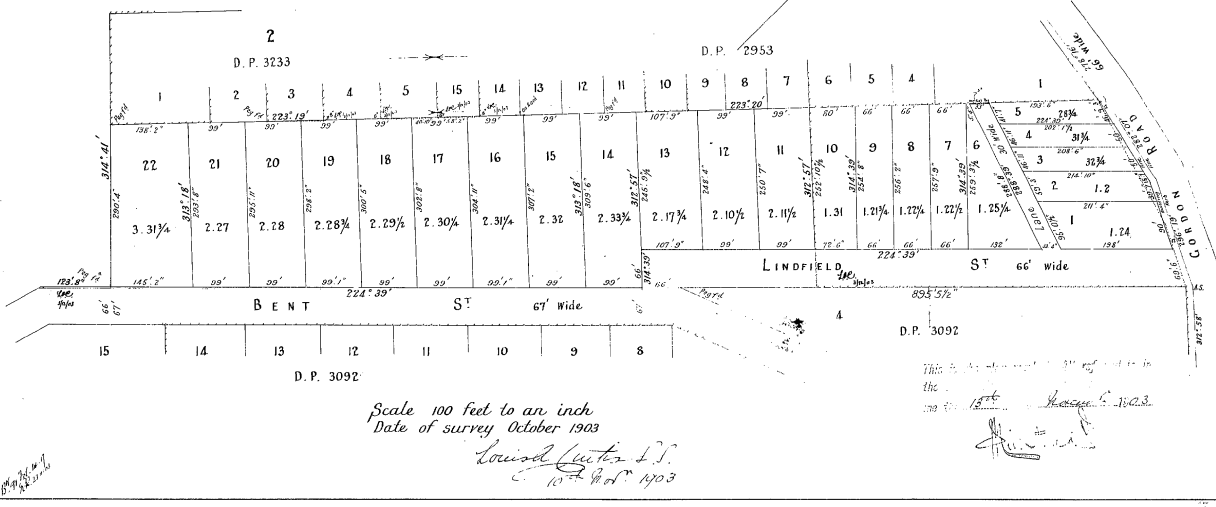


PLAN
of subdivision of Por 158 S. Orion's 30 ac Grant
at Lindfield
Parish of Gordon County of Cumberland

4195
DP 4195



1
5

1. This plan was prepared by the Surveyor-General for the purposes of the Land Act, 1903, and is subject to the provisions of that Act. It is not to be taken as a guarantee of accuracy, and is not to be used as evidence of title.

CONTINUED.

AC	RD	P	sq m
1			6870
2			6870
3			6870
4			6870
5			6870
6			6870
7			6870
8			6870
9			6870
10			6870
11			6870
12			6870
13			6870
14			6870
15			6870
16			6870
17			6870
18			6870
19			6870
20			6870
21			6870
22			6870
23			6870
24			6870
25			6870
26			6870
27			6870
28			6870
29			6870
30			6870
31			6870
32			6870
33			6870
34			6870
35			6870
36			6870
37			6870
38			6870
39			6870
40			6870
41			6870
42			6870
43			6870
44			6870
45			6870
46			6870
47			6870
48			6870
49			6870
50			6870
51			6870
52			6870
53			6870
54			6870
55			6870
56			6870
57			6870
58			6870
59			6870
60			6870
61			6870
62			6870
63			6870
64			6870
65			6870
66			6870
67			6870
68			6870
69			6870
70			6870
71			6870
72			6870
73			6870
74			6870
75			6870
76			6870
77			6870
78			6870
79			6870
80			6870
81			6870
82			6870
83			6870
84			6870
85			6870
86			6870
87			6870
88			6870
89			6870
90			6870
91			6870
92			6870
93			6870
94			6870
95			6870
96			6870
97			6870
98			6870
99			6870
100			6870