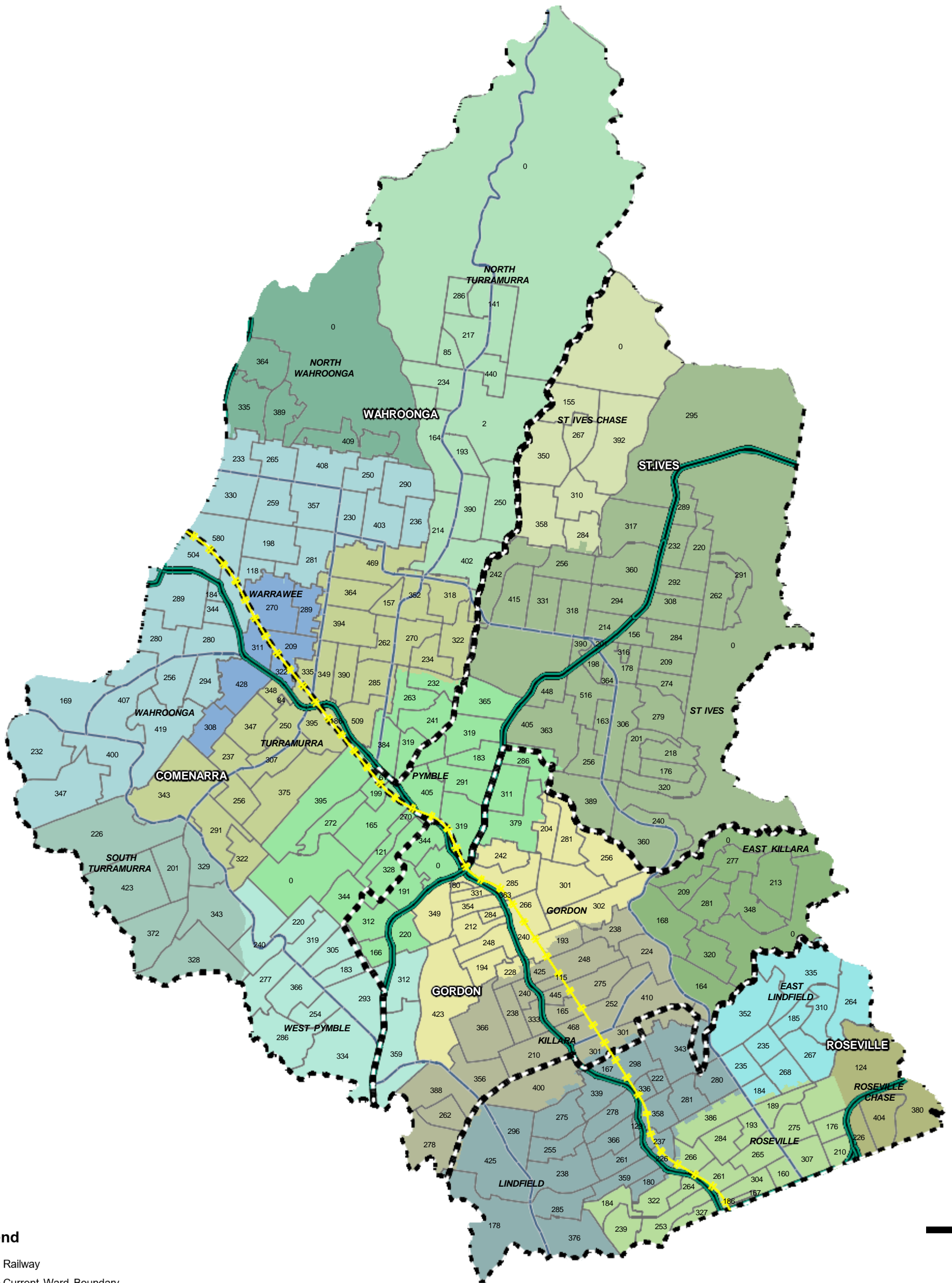


# Ku-ring-gai ward boundaries, suburbs, census districts with enrolment numbers official boundaries (as July 2023)

Enrolment numbers data source: NSW Electoral Commission (extract date 23/05/2023)



## Legend

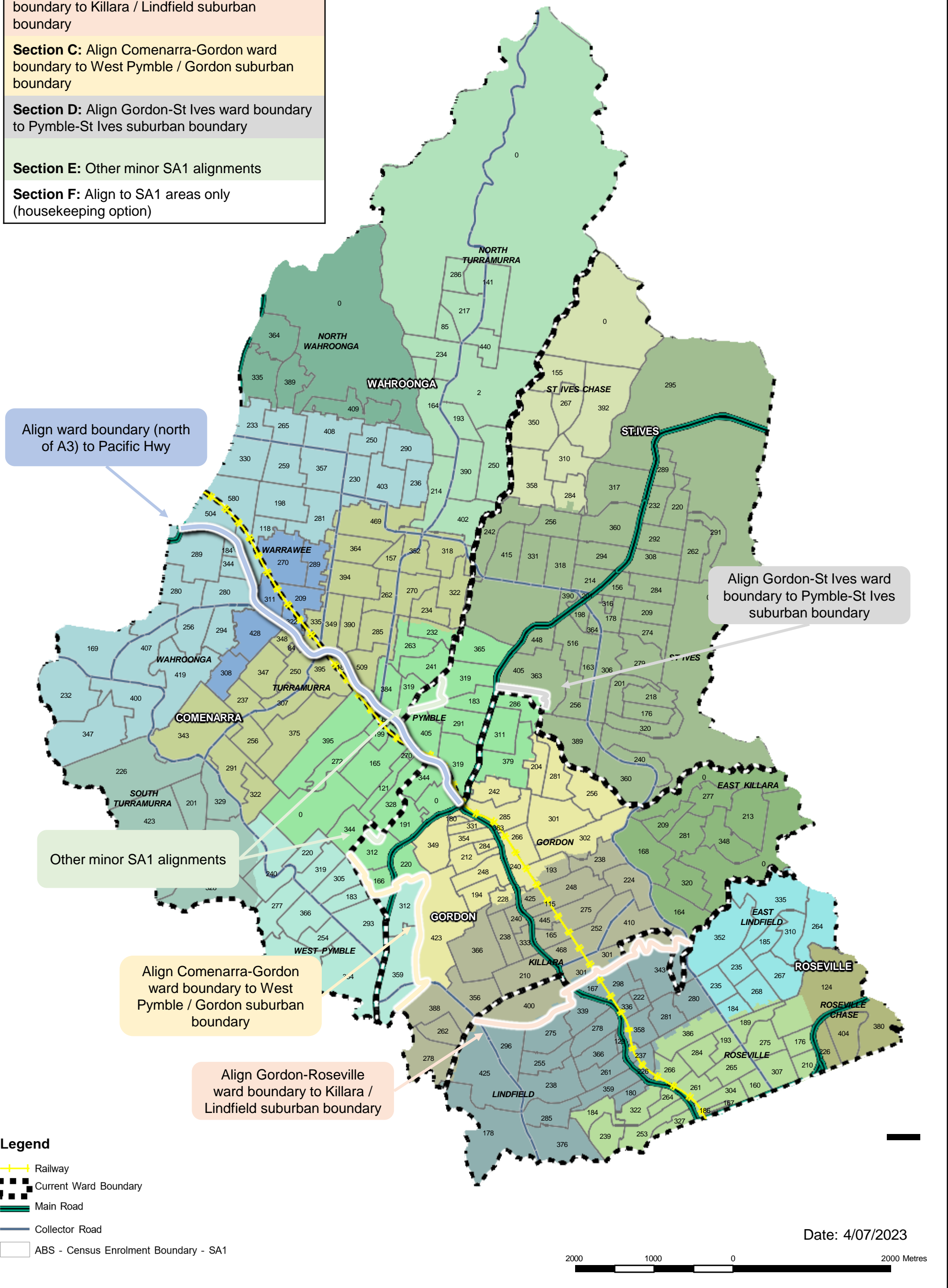
- Railway
- Current Ward Boundary
- Main Road
- Collector Road
- ABS - Census Enrolment Boundary - SA1

Date: 4/07/2023

2000 1000 0 2000 Metres

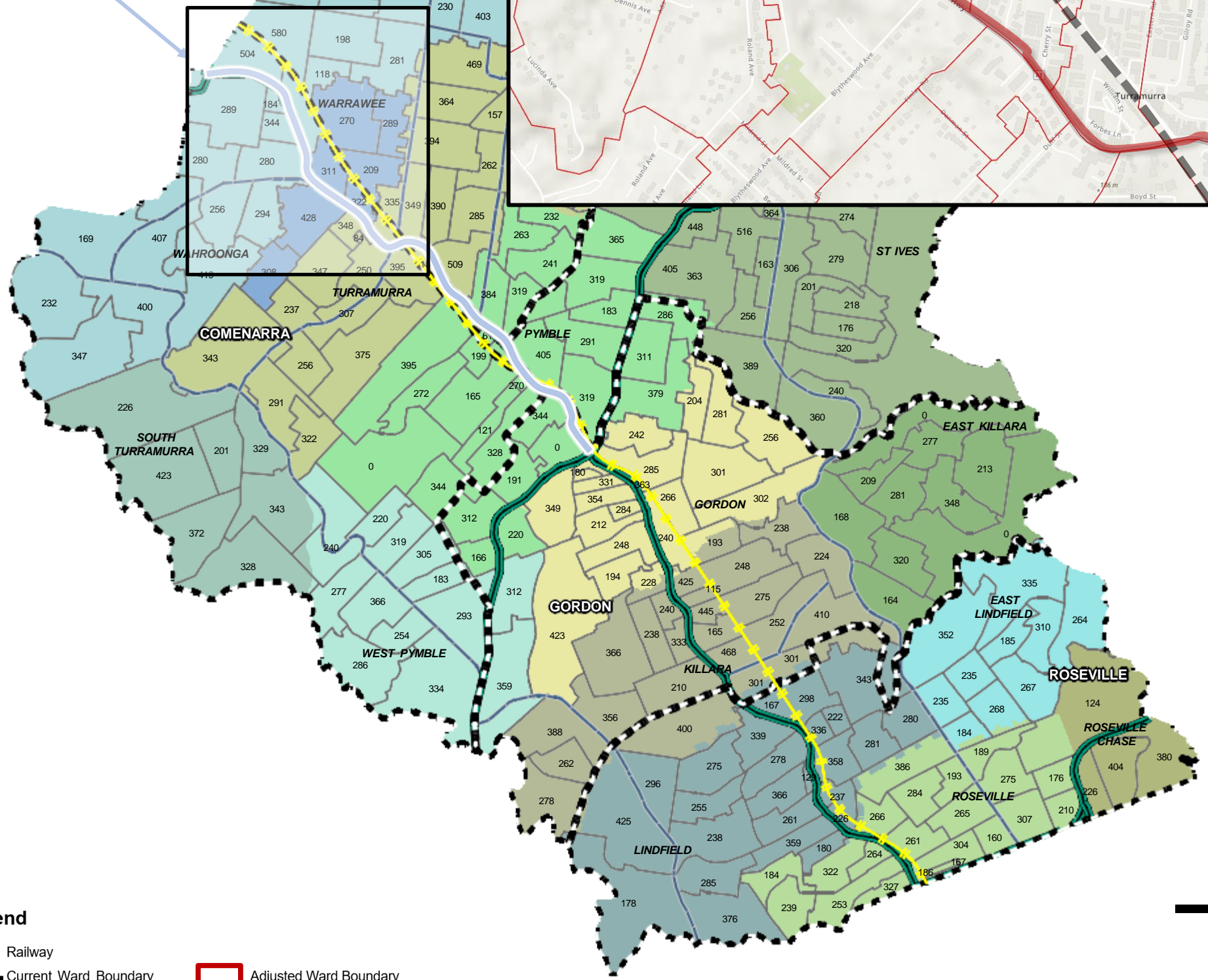
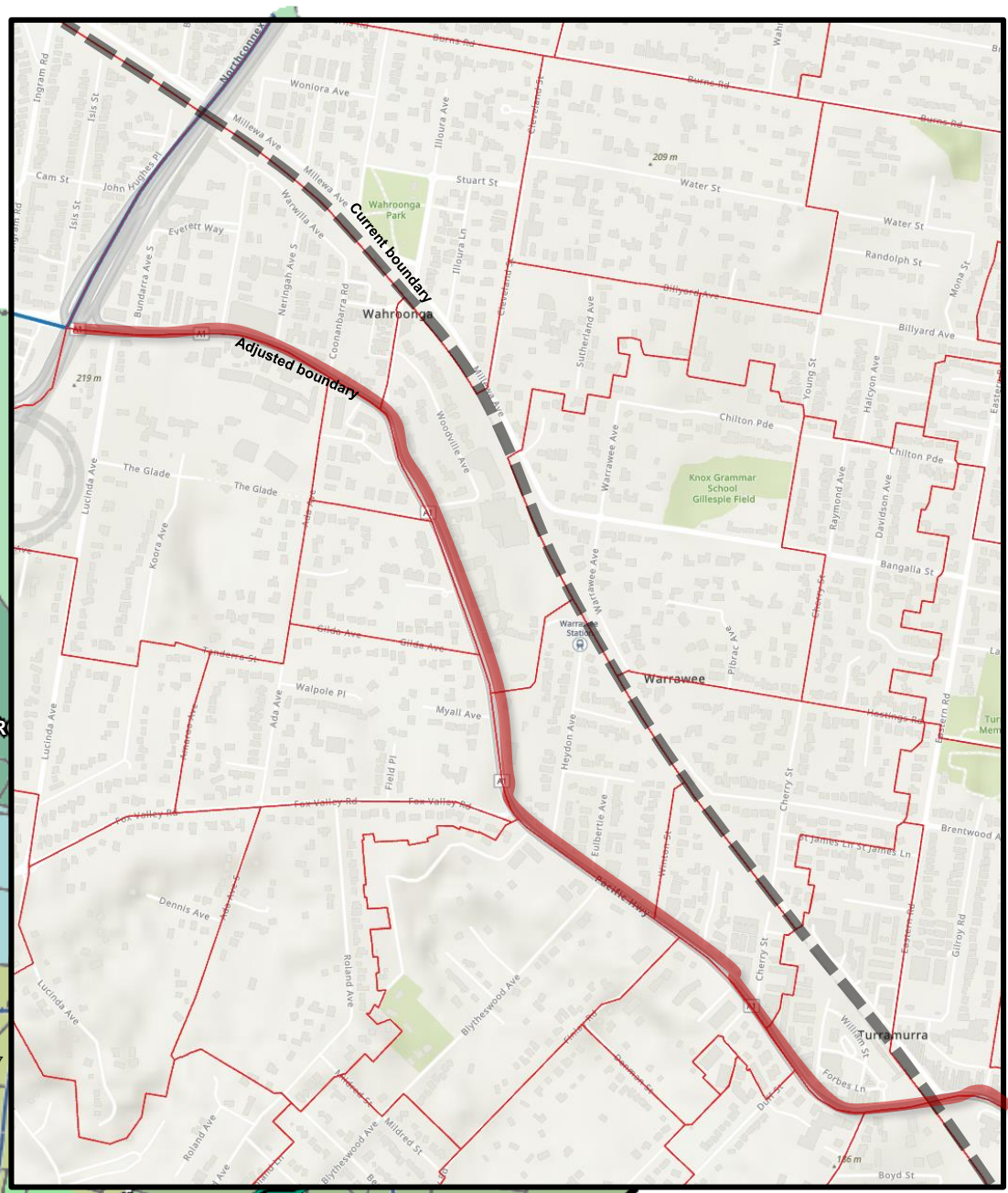
Redistribution options considered

- Section A:** Align ward boundary (north of A3) to Pacific Hwy
- Section B:** Align Gordon-Roseville ward boundary to Killara / Lindfield suburban boundary
- Section C:** Align Comenarra-Gordon ward boundary to West Pymble / Gordon suburban boundary
- Section D:** Align Gordon-St Ives ward boundary to Pymble-St Ives suburban boundary
- Section E:** Other minor SA1 alignments
- Section F:** Align to SA1 areas only (housekeeping option)



# Section A.1: Align ward boundary (north of A3) to Pacific Hwy

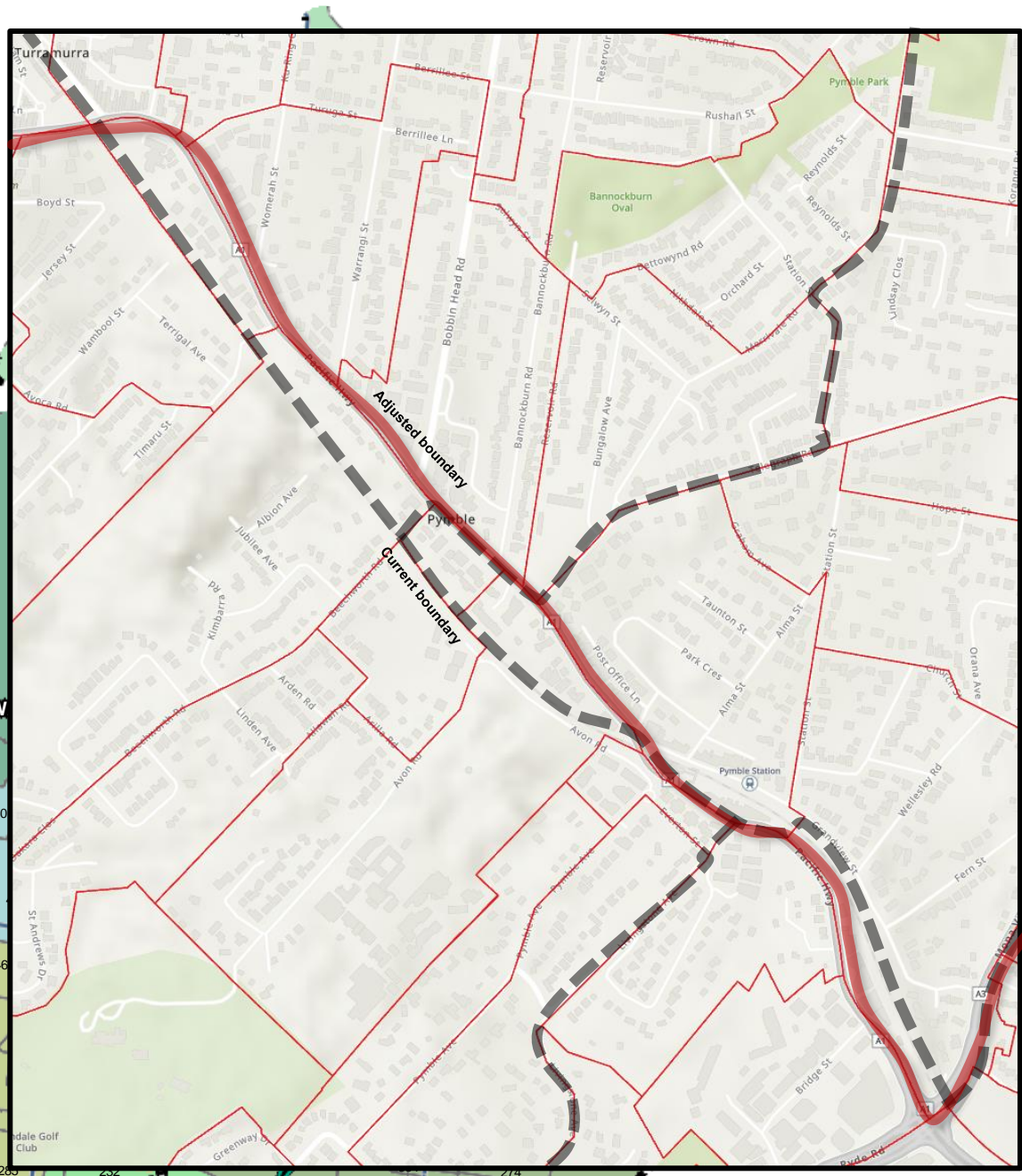
Align ward boundary (north of A3) to Pacific Hwy



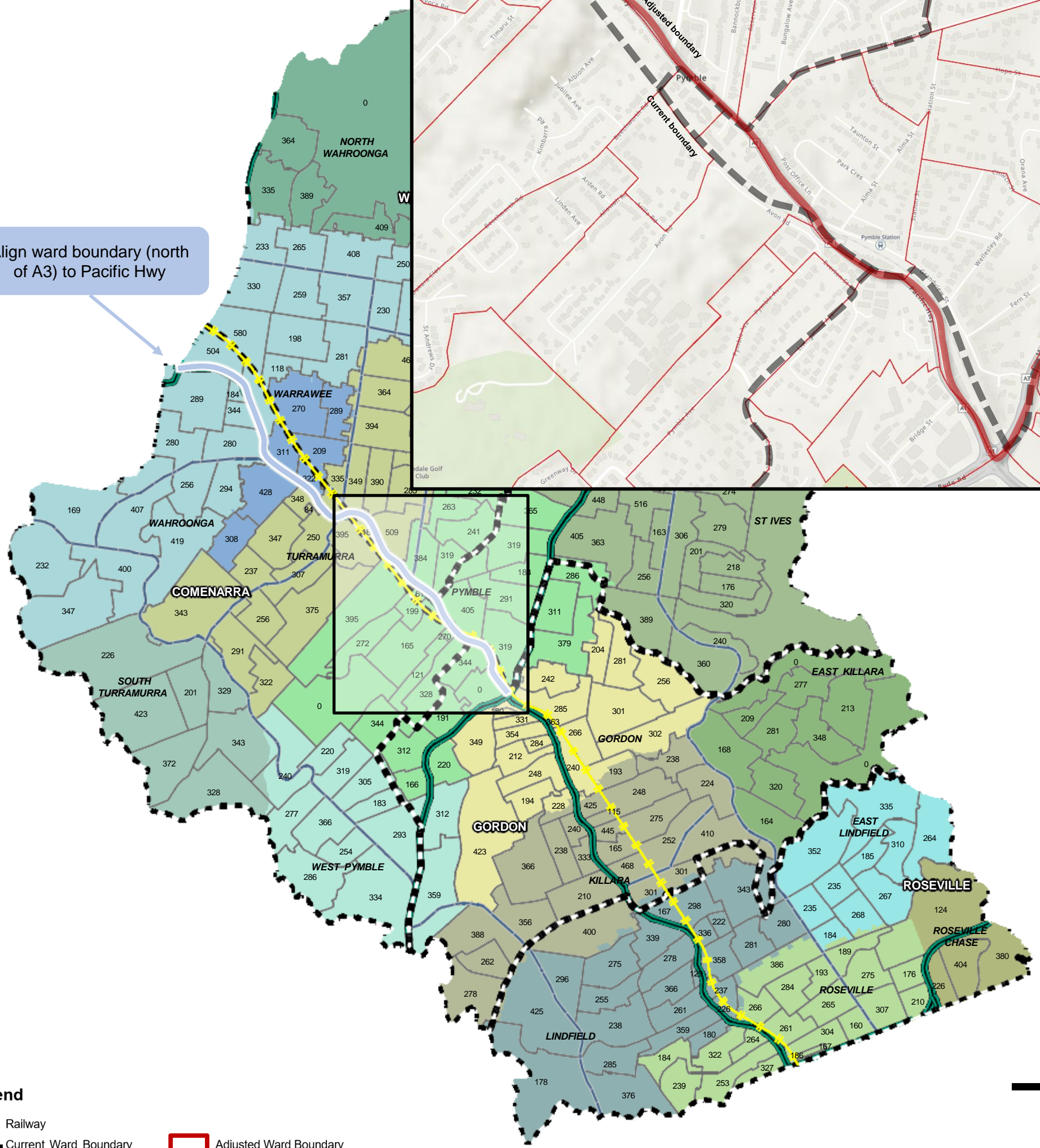
- Legend**
- Railway
  - Current Ward Boundary
  - Adjusted Ward Boundary
  - Main Road
  - Collector Road
  - ABS - Census Enrolment Boundary - SA1

## Section A.2: Align ward boundary (north of A3) to Pacific Hwy

Ward	Current electors	Adjusted electors	Change (Sections A.1 & A.2)
Comenarra	16807	15940	-867
Gordon	17053	17047	-6
Roseville	16529	16549	0
St Ives	16572	16374	-198
Wahroonga	16101	17172	+1071
<b>Variance</b>	<b>5.91%</b>	<b>7.73%</b>	<b>+1.82%</b>



Align ward boundary (north of A3) to Pacific Hwy



### Legend

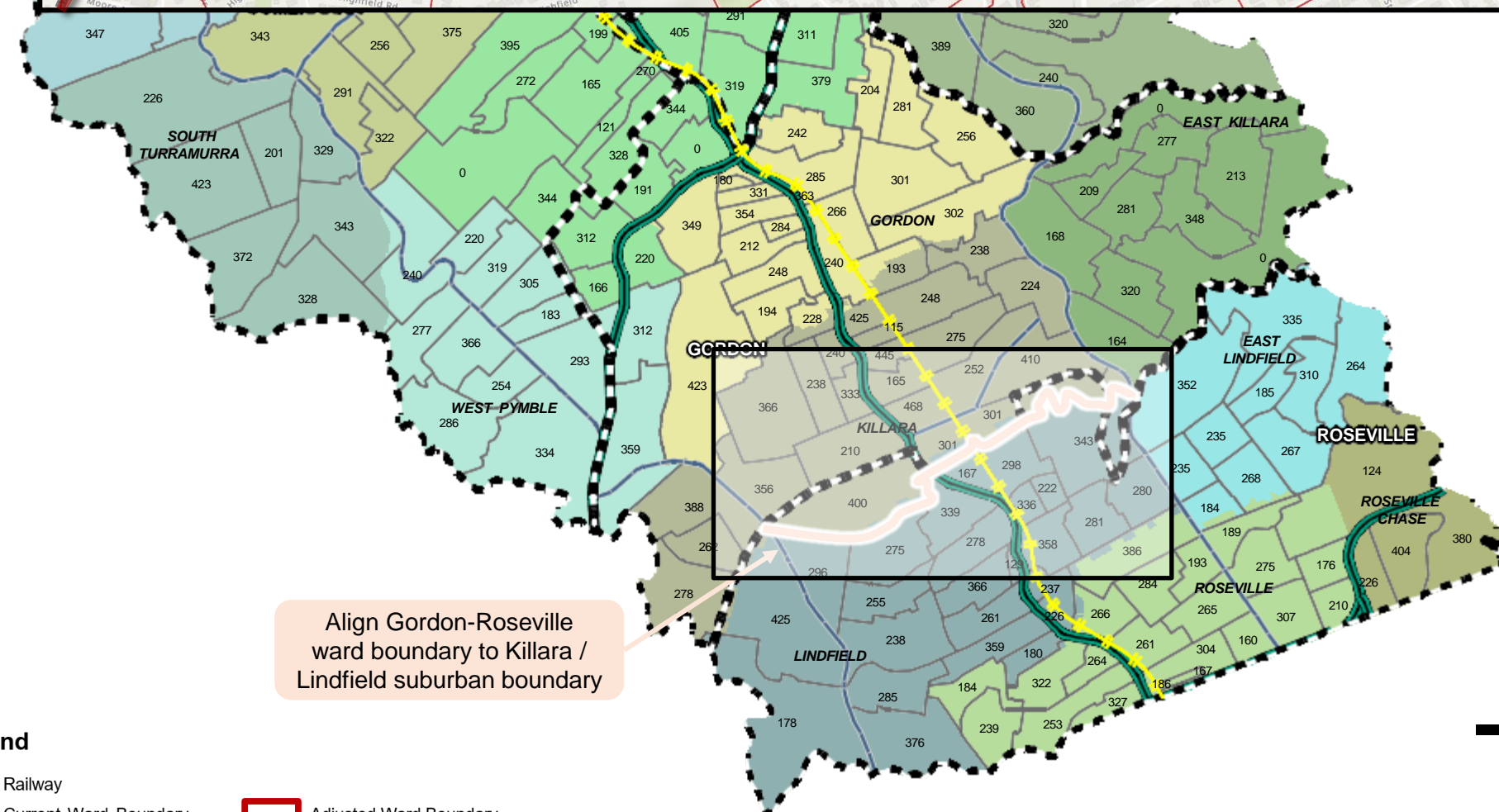
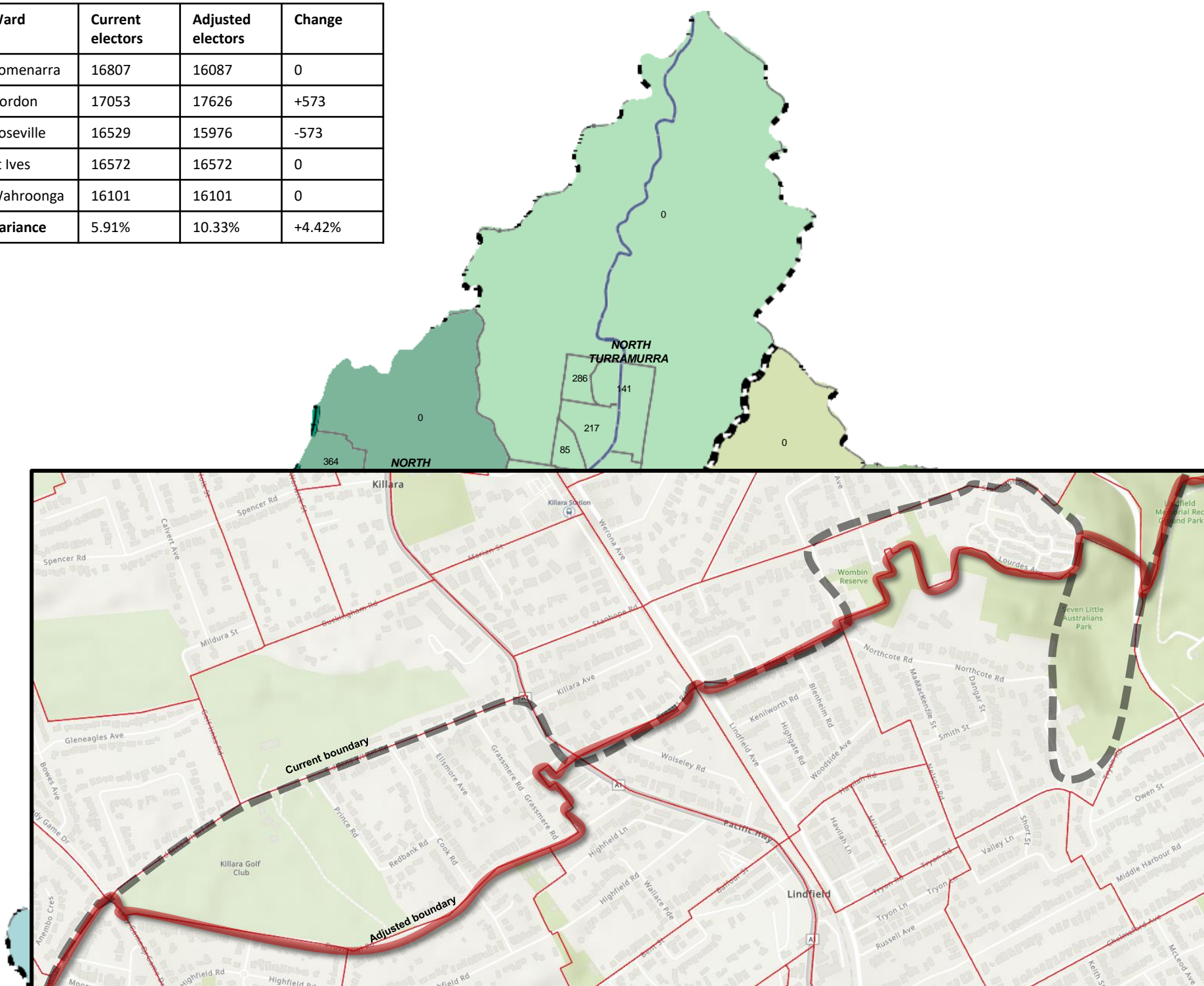
- Railway
- Current Ward Boundary
- Adjusted Ward Boundary
- Main Road
- Collector Road
- ABS - Census Enrolment Boundary - SA1

Date: 4/07/2023



## Section B: Align Gordon-Roseville ward boundary to Killara / Lindfield suburban boundary

Ward	Current electors	Adjusted electors	Change
Comenarra	16807	16087	0
Gordon	17053	17626	+573
Roseville	16529	15976	-573
St Ives	16572	16572	0
Wahroonga	16101	16101	0
<b>Variance</b>	<b>5.91%</b>	<b>10.33%</b>	<b>+4.42%</b>



Align Gordon-Roseville ward boundary to Killara / Lindfield suburban boundary

### Legend

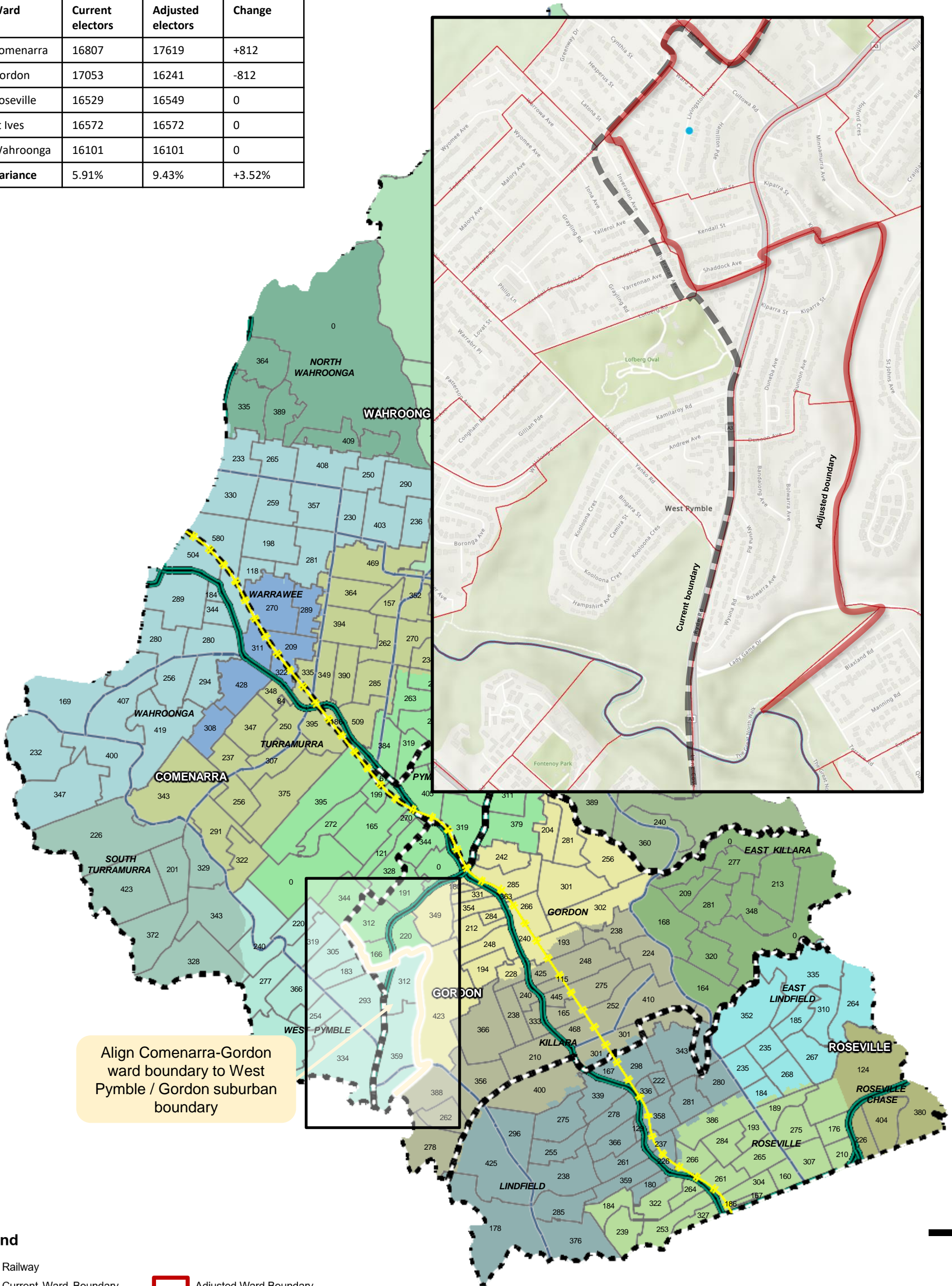
- Railway
- Current Ward Boundary
- Adjusted Ward Boundary
- Main Road
- Collector Road
- ABS - Census Enrolment Boundary - SA1

2000 1000 0 2000 Metres

Date: 4/07/2023

## Section C: Align Comenarra-Gordon ward boundary to West Pymble / Gordon suburban boundary

Ward	Current electors	Adjusted electors	Change
Comenarra	16807	17619	+812
Gordon	17053	16241	-812
Roseville	16529	16549	0
St Ives	16572	16572	0
Wahroonga	16101	16101	0
<b>Variance</b>	<b>5.91%</b>	<b>9.43%</b>	<b>+3.52%</b>



Align Comenarra-Gordon ward boundary to West Pymble / Gordon suburban boundary

### Legend

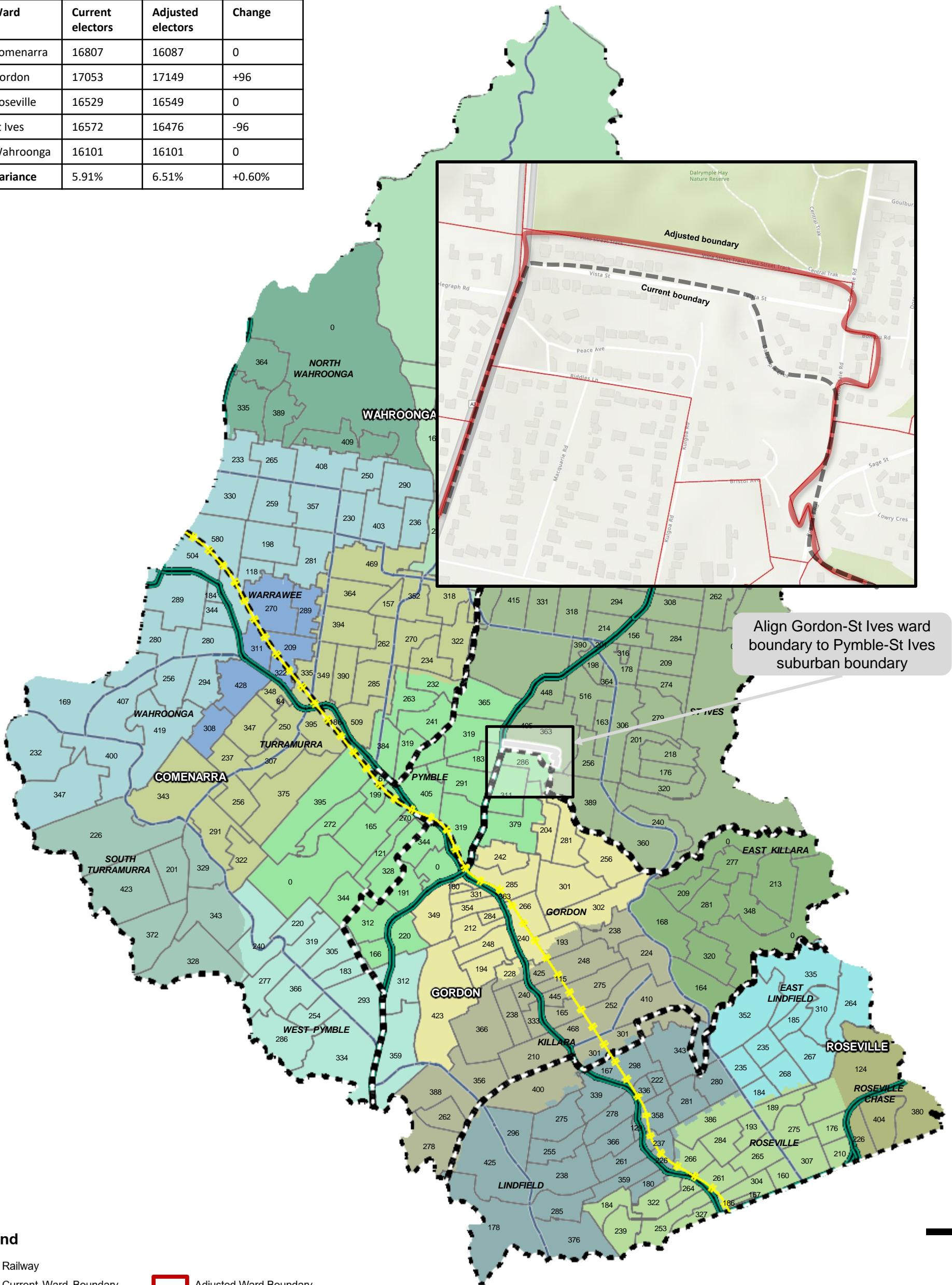
- Railway
- Current Ward Boundary
- Adjusted Ward Boundary
- Main Road
- Collector Road
- ABS - Census Enrolment Boundary - SA1

Date: 4/07/2023

2000 1000 0 2000 Metres

# Section D: Align Gordon-St Ives ward boundary to Pymble-St Ives suburban boundary

Ward	Current electors	Adjusted electors	Change
Comenarra	16807	16087	0
Gordon	17053	17149	+96
Roseville	16529	16549	0
St Ives	16572	16476	-96
Wahroonga	16101	16101	0
<b>Variance</b>	<b>5.91%</b>	<b>6.51%</b>	<b>+0.60%</b>



Align Gordon-St Ives ward boundary to Pymble-St Ives suburban boundary

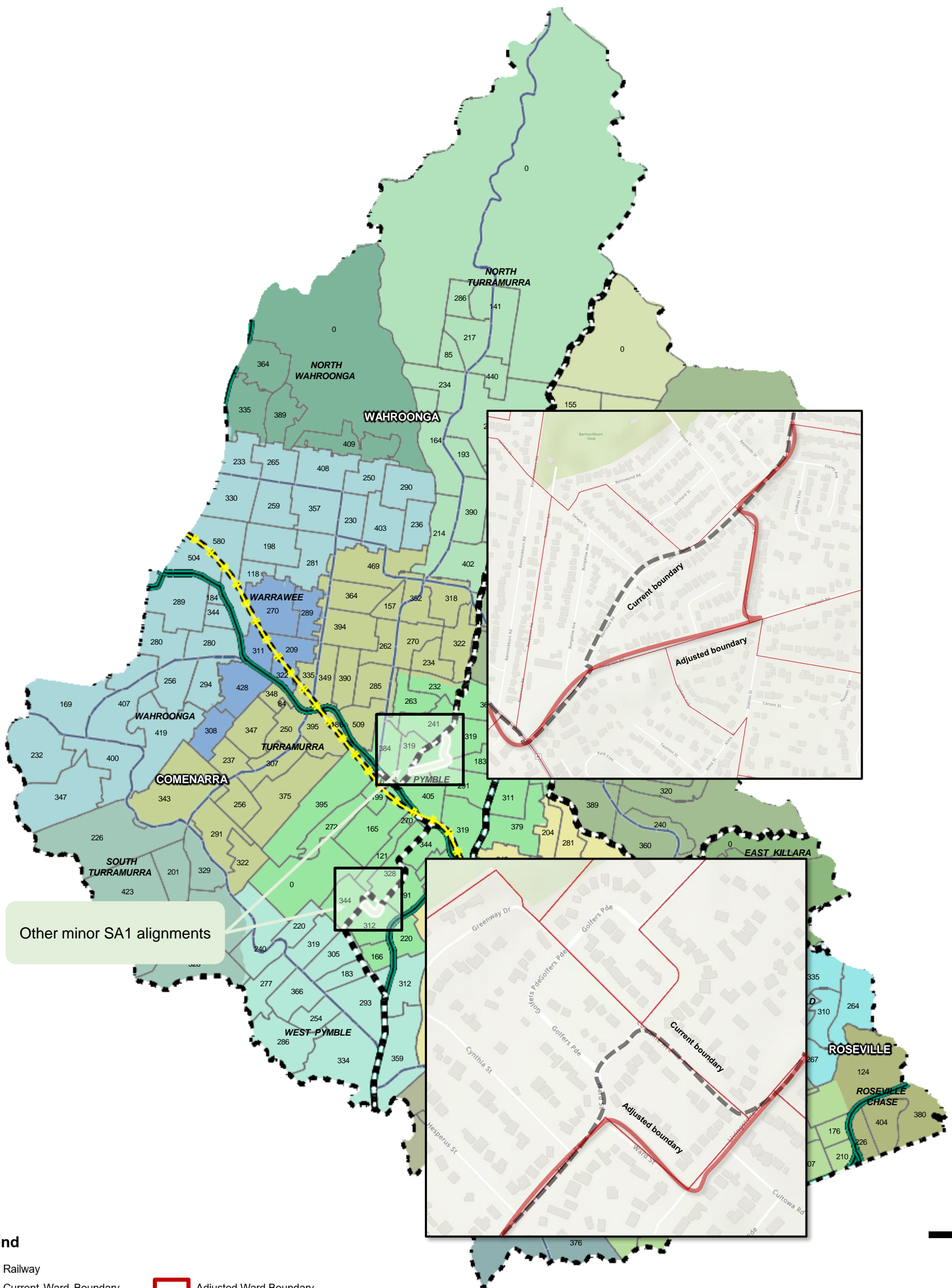
### Legend

- Railway
- Current Ward Boundary
- Adjusted Ward Boundary
- Main Road
- Collector Road
- ABS - Census Enrolment Boundary - SA1

2000 1000 0 2000 Metres

Date: 4/07/2023

# Section E: Other minor SA1 alignments



Other minor SA1 alignments

### Legend

- Railway
- Current Ward Boundary
- Main Road
- Collector Road
- ABS - Census Enrolment Boundary - SA1
- Adjusted Ward Boundary

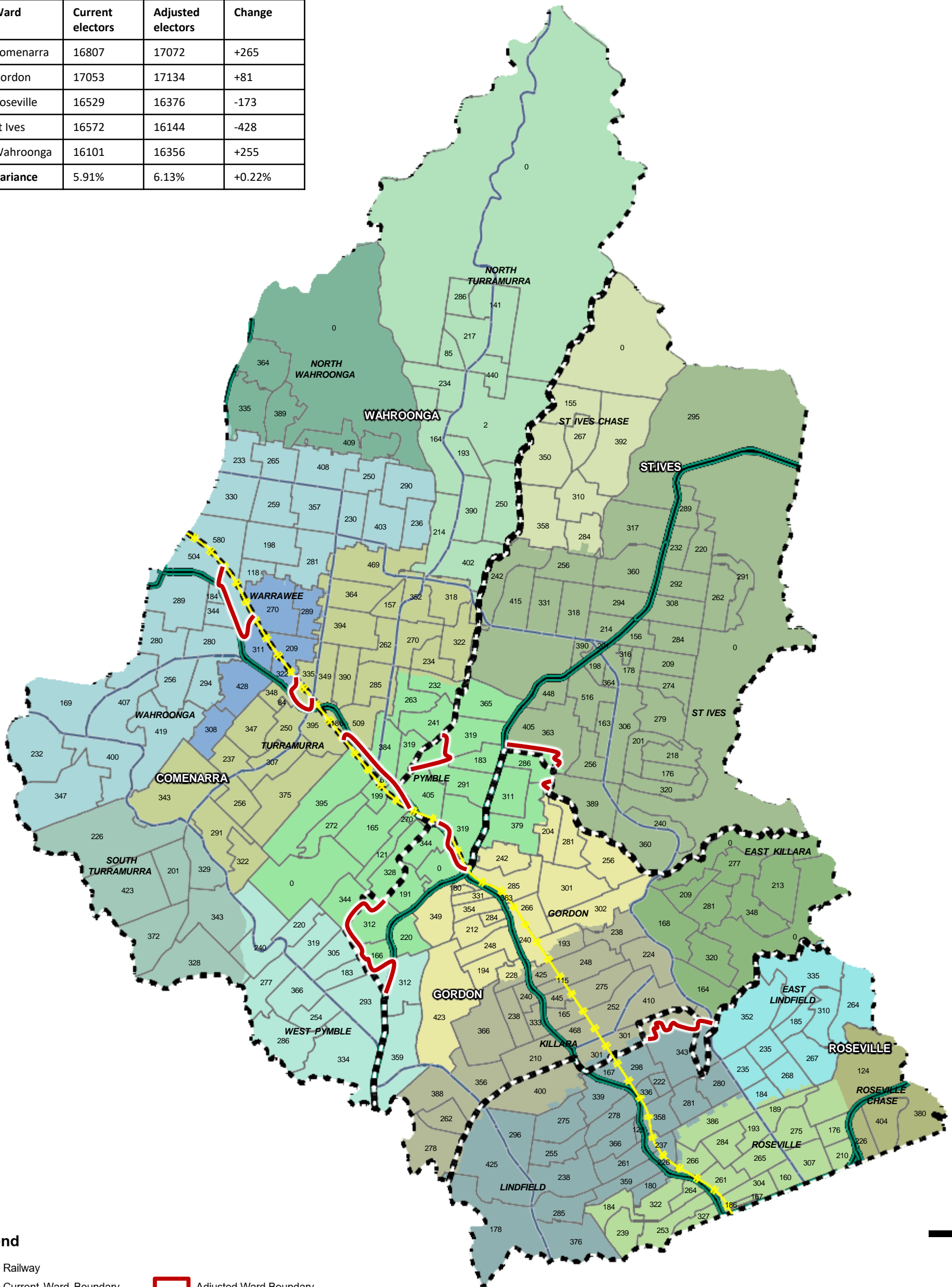
Date: 4/07/2023

2000 1000 0 2000 Metres


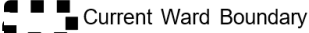






## Section F: Align to SA1 boundaries only (housekeeping option)

Ward	Current electors	Adjusted electors	Change
Comenarra	16807	17072	+265
Gordon	17053	17134	+81
Roseville	16529	16376	-173
St Ives	16572	16144	-428
Wahroonga	16101	16356	+255
<b>Variance</b>	5.91%	6.13%	+0.22%



### Legend

-  Railway
-  Current Ward Boundary
-  Adjusted Ward Boundary
-  Main Road
-  Collector Road
-  ABS - Census Enrolment Boundary - SA1

Date: 4/07/2023

2000 1000 0 2000 Metres